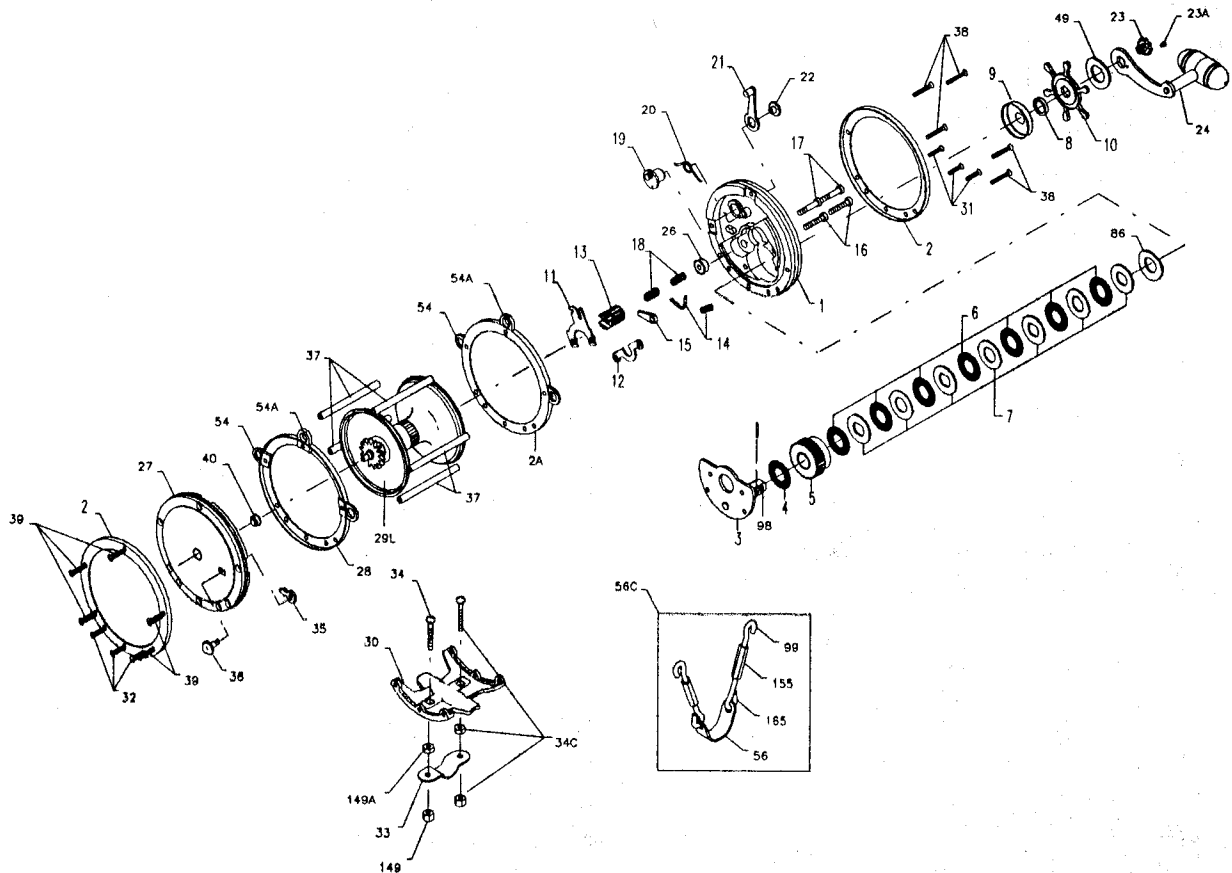




# PARTS AND PRICE LIST FOR MODEL 117L



Key No.	Part No.	Description	Price	Key No.	Part No.	Description	Price
1	001 117	Right Side Plate	\$18.25	27	027 117	Left Side Plate	\$16.45
2	002 1170	Outer Right Side Ring (2 req.)	13.50	29L	029L117	Spool	145.00
2A	002 117L	Inner Right Side Ring (2-req.)	13.50	30	030 117	Stand	23.00
3	003 117	Bridge w/Sleeve	23.00	31	039 012	R.S. Stand Screw	.50
4	004 117	Fiber Washer	1.05	32	039 012	L.S. Stand Screw	.50
5	005 117	Main Gear	22.00	33	033 117	Rod Clamp	10.65
6	006 117	Drag Washer (7 req.)	1.80	*033R117	*033R117	Ringed Rod Clamp (Optional)	16.20
7C	007C117	Metal Drag Washer Set	7.35	34	034 130	Clamp Screw	2.25
8	008 117	Tension Spring	1.10	34C	034C116	Clamp Screw w/Nuts	4.15
9	009 117	Drag Cover Only	2.25	35	035 115	Click Tongue	1.25
10	010 117	Star Drag Wheel	7.50	36	036 117	Click Button	1.75
11	011 118	Eccentric Jack	4.05	37	037 116	Frame Post (8 req.)	2.85
12	012 116	Pinion Yoke	2.35	38	039 013	Right Side Post Screw (8 req.)	.50
13	013 117	Pinion	13.00	39	039 013	Left Side Post Screw (8 req.)	.50
14	014 117	Dog Spring	.55	40	026 117	Left Side Bearing	14.00
15	015 117	Dog	1.80	49	049 116	Handle Spacer	.40
16	016 114	Lower Bridge Screw (2 req.)	.55	54	054 117	Harness Lug (6 req.)	2.45
17	017 114	Upper Bridge Screw (2 req.)	.55	56	056 117	Rod Brace (2 req.)	6.45
18	018 114	Clutch Springs (2 req.)	.50	56C	056C117	Rod Brace (Complete)	15.95
19	019 115	Eccentric	3.05	56P	056P117	Rod Brace Pad	.50
20	020 114	Eccentric Spring	.85	86	086 118	Beveled Washer	1.50
21	021 117	Eccentric Lever	3.50	98	098 117	Gear Sleeve	7.00
22	023 060	Eccentric Screw	1.75	99	099 118	Hook Screw L.H. Thread (2 req.)	1.30
23	023 116	Handle Screw	3.10	149	149 116L	Hex Nut (2 req.)	.95
23A	110 060	Handle Lock Screw	.45	149A	149 116H	Clamp Nut (2 req.)	.95
24	024 117	Handle	18.60	155	155 116	Turn Buckle (2 req.)	1.85
26	026 117	Right Side Bearing	14.00	165	165 116	Hook Screw L.H. Thread (4 req.)	1.30